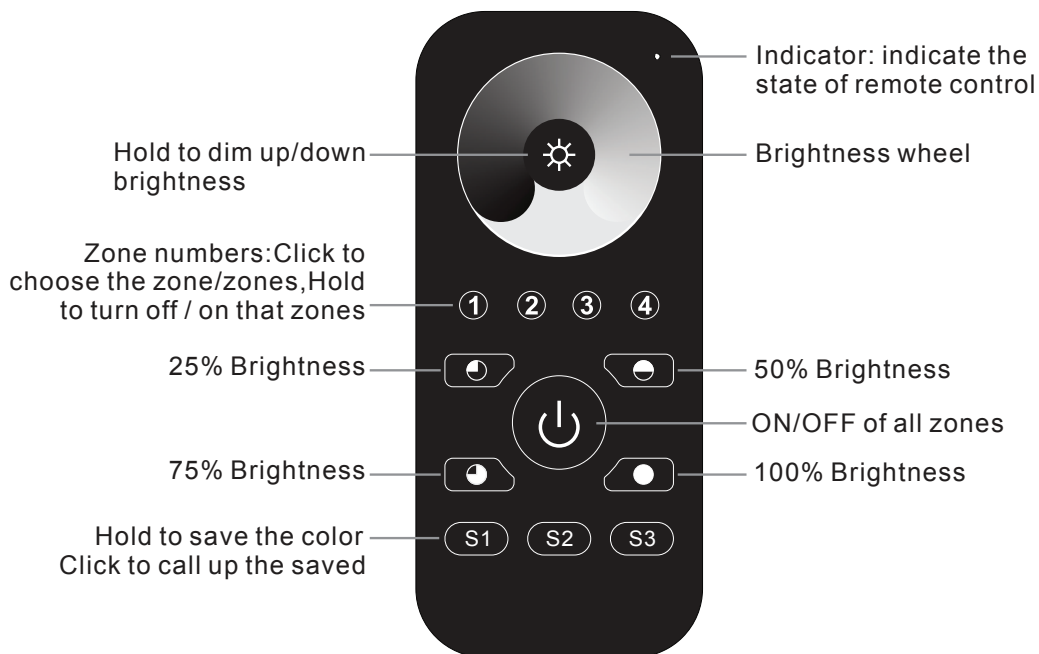
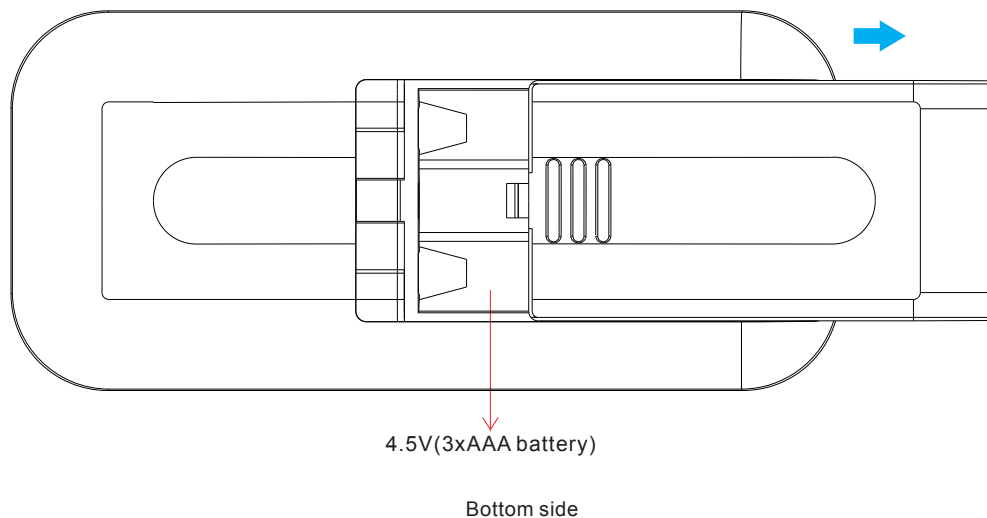


Dimming Hand Remote Installation Guide

INSTRUCTION



**Note : This remote controls 4 zones (areas) receivers, each zone can pair with countless receivers.
1 receiver can be paired by max 8 different remote controls.**



Dimming Hand Remote Installation Guide

PRODUCT DATA

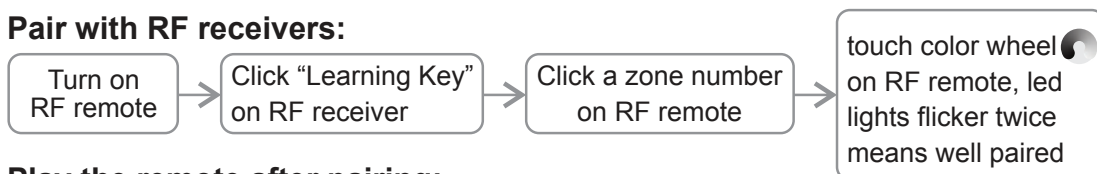
Output	RF Signal
Operation Frequency	869.5 / 916.5 / 434MHz
Power supply	4.5V (3xAAA battery)
Operating Temperature	0 - 40°C
Relative humidity	8% - 80%
Dimensions	4.7" x 2.2" x 0.67"

- Control 4 zones of RF receivers separately.
- CCT color controller
- High sensitive & high stable, fast & precise color control.
- Compatible with all universal series RF receivers
- 1 receiver can be paired by max 8 different remote control
- Waterproof grade: IP20

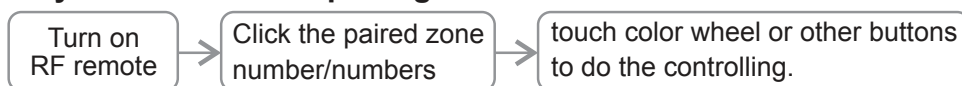
Safety & Warning

- This device contains AAA batteries that shall be stored and disposed properly
- DO NOT expose the device to moisture

1. Pair with RF receivers:



2. Play the remote after pairing:



3. Save color/scene:



4. Call up the saved:

Select zone button which we want to call up , then click save button S1,S2,S3.

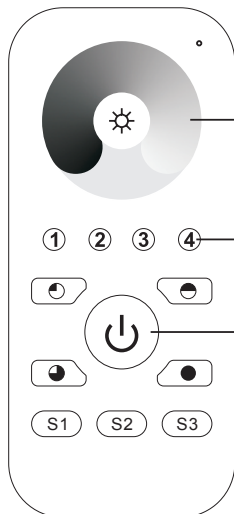
5. How to delete the pairing:

Power on the RF receiver, hold the "Learning Key" over 3 seconds until connected led lights flicker twice means well deleted.

Dimming Hand Remote Installation Guide

PAIR WITH RF RECEIVER

Pair with RF receiver(Method 1)



Step 1: Do wiring the RF receiver according to wiring diagram(please refer to the instruction of RF receiver that you would like to pair with).

Step 5: Touch the color wheel, LED lights connected with the RF receiver flicker once means the receiver is paired with zone 4 successfully.

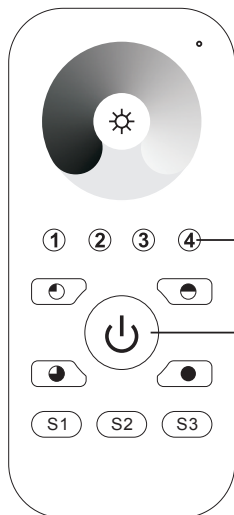
Step 4: Choose and click a zone number(e.g. zone 4)

Step 2: Click ON/OFF button to activate the remote



Step 3: Click the "Learning Key" button on RF receiver or re-power on the receiver three times continuously to set it into pairing status

Pair with RF receiver(Method 2)



Step 1: Do wiring the RF receiver according to wiring diagram(please refer to the instruction of RF receiver that you would like to pair with).

Step 4: Choose and click a zone number(e.g. zone 4) twice, then press and hold it continuously and quickly within 10 seconds, LED lights connected with the RF receiver flicker once means the receiver is paired with zone 4 successfully.

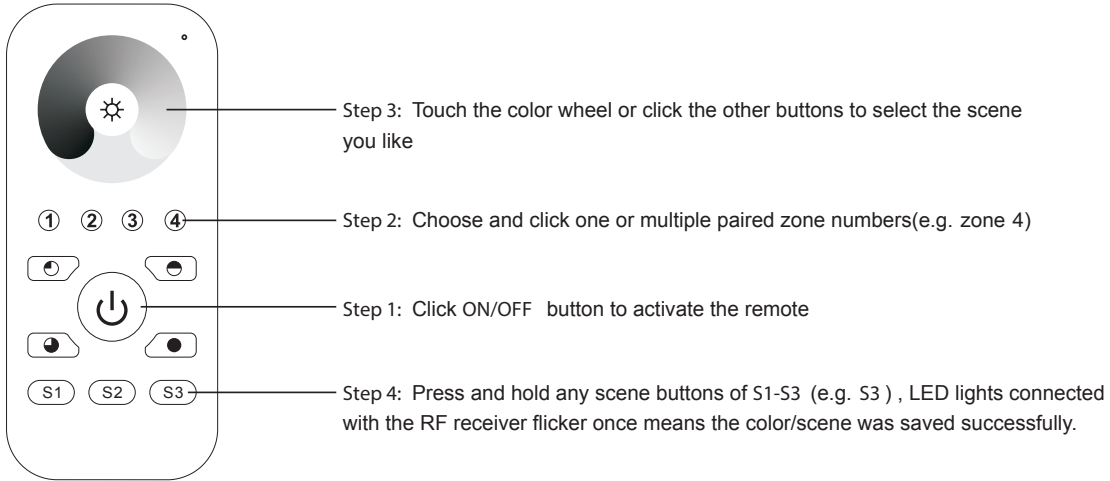
Step 2: Click ON/OFF button to activate the remote



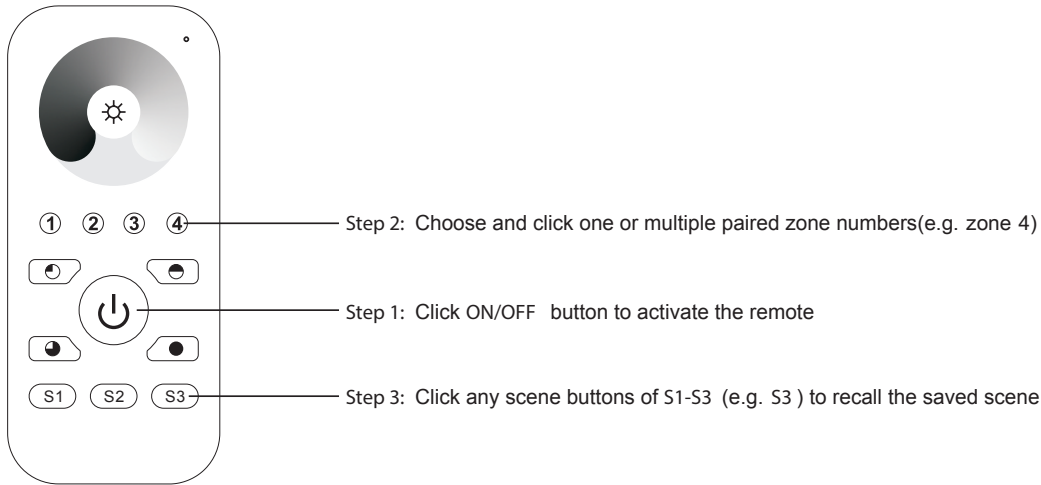
Step 3: Power off and power on the receiver

Dimming Hand Remote Installation Guide

SAVE COLOR / SCENE / MODE



RECALL THE SAVE COLOR / SCENES



If you use multiple receivers, you have two choices:
 Option 1: have all the receivers in the same zone, like zone 1



Option 2: have each receiver in a different zone, like zone 1, 2, 3 or 4

