



120V SERIES

LED STRIP LIGHT 4W/FT | 6W/FT

PROJECT:  
PREPARED BY:  
DATE:  
TYPE:



Sub-Primary Lighting

4W / FT | 6W/ FT

120V

The 120V Series offers a line-voltage lighting solution designed for easy, transformer-free installation. Available in 4W/ft and 6W/ft options, it features 120V direct connection, 90+ CRI, and long maximum runs of up to 164 feet, making it ideal for large-scale installations. With a variety of color temperatures (2400K-5000K), and Triac dimming compatibility, this strip light delivers seamless, energy-efficient illumination for both indoor and outdoor applications

Ideal for sub-primary lighting levels, the 120V Series delivers powerful yet controlled illumination, making it perfect for cove lighting, ceiling integrations, and layered architectural designs

PERFORMANCE

|                  |                        |                 |         |
|------------------|------------------------|-----------------|---------|
| • Wattage        | 4W/FT   6W/FT          | • Power Factor  | 0.93    |
| • Input Power    | 120V                   | • Certification | ETL     |
| • CRI            | 90+                    | • Dimming       | Triac   |
| • LED Density/FT | 18 (4W)   26 (6W)      | • Warranty      | 5 years |
| • Maximum Run    | 164FT (4W)   66FT (6W) |                 |         |

DIMENSIONS

|                   |                        |
|-------------------|------------------------|
| • Length per Roll | 164FT (4W)   66FT (6W) |
| • Height x Width  | 0.26" x 0.6"           |

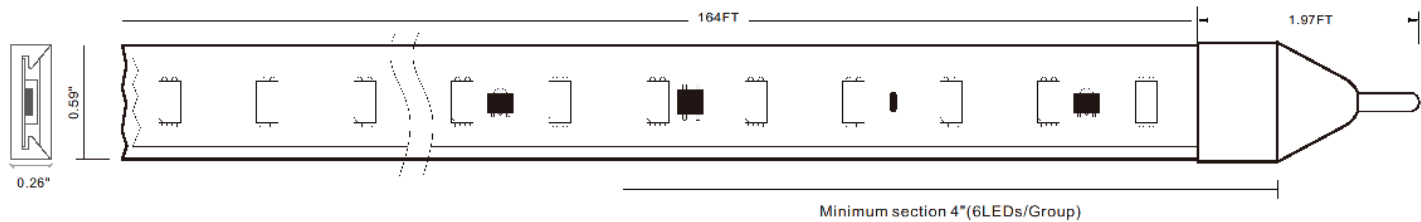
INSTALLATION

|                    |                      |                       |              |
|--------------------|----------------------|-----------------------|--------------|
| • Environment      | IP20                 | • Adhesive            | 3M           |
| • Cutting Interval | 4" (4W)   3.43" (6W) | • Ambient Temperature | -20°C to 40° |



120V SERIES  
LED STRIP LIGHT 4W/FT | 6W/FT

PROJECT:  
PREPARED BY:  
DATE:  
TYPE:



ORDER GUIDE

| Model   | Length (ft) | Wattage | CCT   | Lumens/FT | Efficacy  | IP Rating |
|---------|-------------|---------|-------|-----------|-----------|-----------|
| LB53646 | 66FT        | 6W/FT   | 2400K | 471LM     | 78.48LM/W | IP20      |
| LB53648 | 66FT        | 6W/FT   | 2700K | 471LM     | 78.48LM/W | IP20      |
| LB53650 | 66FT        | 6W/FT   | 3000K | 509LM     | 84.90LM/W | IP20      |
| LB53652 | 66FT        | 6W/FT   | 3500K | 542LM     | 90.35LM/W | IP20      |
| LB53654 | 66FT        | 6W/FT   | 4000K | 554LM     | 92.29LM/W | IP20      |
| LB53656 | 66FT        | 6W/FT   | 5000K | 554LM     | 92.29LM/W | IP20      |
| LB53658 | 164FT       | 4W/FT   | 2400K | 260LM     | 65LM/W    | IP20      |
| LB53659 | 164FT       | 4W/FT   | 2700K | 270LM     | 67LM/W    | IP20      |
| LB53660 | 164FT       | 4W/FT   | 3000K | 270LM     | 67LM/W    | IP20      |
| LB53662 | 164FT       | 4W/FT   | 3500K | 300LM     | 75LM/W    | IP20      |
| LB53664 | 164FT       | 4W/FT   | 4000K | 320LM     | 80LM/W    | IP20      |
| LB53666 | 164FT       | 4W/FT   | 5000K | 320LM     | 80LM/W    | IP20      |

• Custom length cuts are sealed and secured at our facility



**120V SERIES**

LED STRIP LIGHT 4W/FT | 6W/FT

PROJECT:  
PREPARED BY:  
DATE:  
TYPE:

**ACCESSORIES**



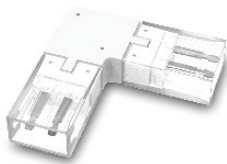
LB53690 - Hardwire Starter  
LB53699 - 3M Hardwire Starter  
LB53700 - 5M Hardwire Starter



LB53691 - Power Plug Starter



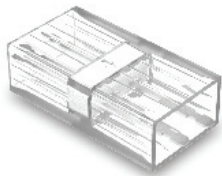
LB53698 - 3" Connector  
LB53693 - 24" Connector



LB53694 - L shape connector



LB53692 - Clear Endcap



LB53695 - Inline connector



LB53697 - PVC Channel

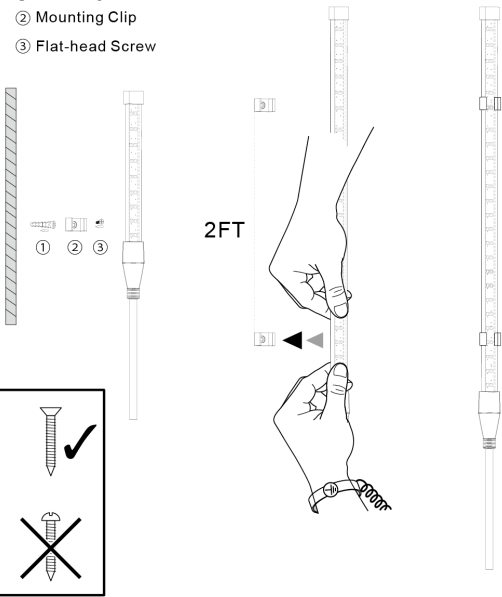


LB53696 - Mounting Clip

**MOUNTING CLIP INSTALLATION GUIDE**

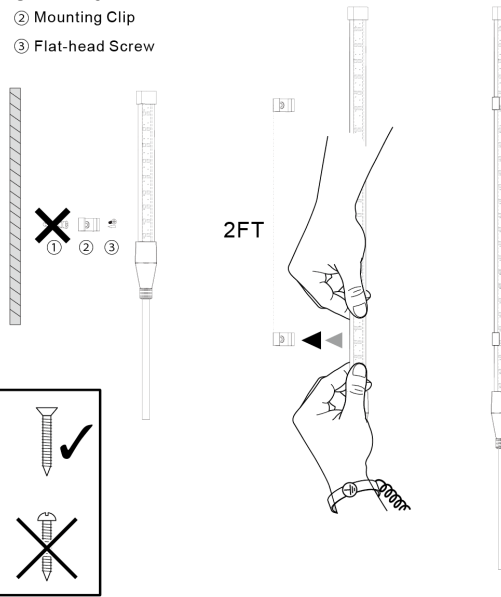
**Installation on Masonry Wall**

- ① Wall Plug
- ② Mounting Clip
- ③ Flat-head Screw



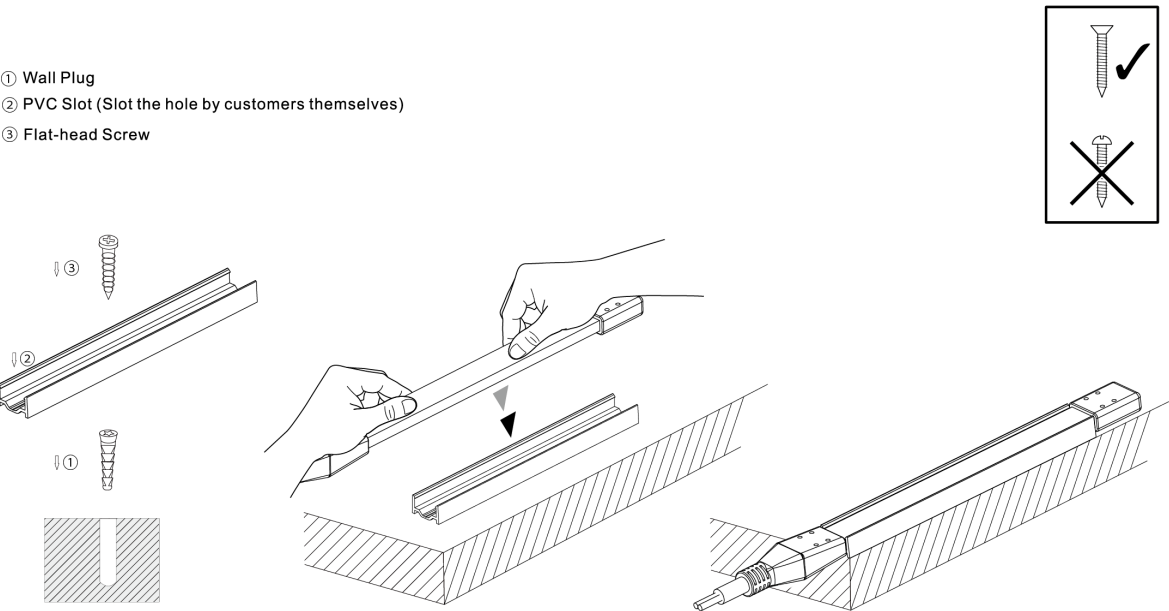
**Installation on Panelling Wall**

- ① Wall Plug
- ② Mounting Clip
- ③ Flat-head Screw



**PVC SLOT INSTALLATION GUIDE**

- ① Wall Plug
- ② PVC Slot (Slot the hole by customers themselves)
- ③ Flat-head Screw



## 120V SERIES

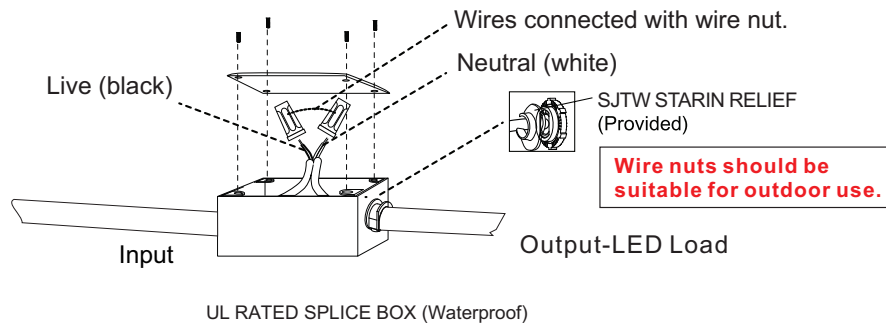
LED STRIP LIGHT 4W/FT | 6W/FT

PROJECT:

PREPARED BY:

DATE:

TYPE:

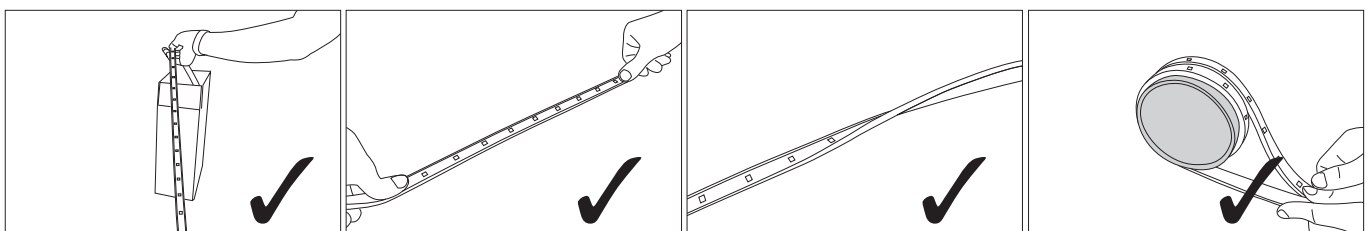


### INSTALLATION PROHIBITION

- Do not install in high corrosive environment.
- Do not install in high temperature or humid enviro
- Do not install under water.
- Do not install in sea water.
- Do not use any chemical glue on the back of the tape light for installation.
- Please use physical installation: mounting clips or PVC channels.

### ATTENTION

- The working ambient temperature is -20 °C to 40 °C (Drop current when over temperature- Max.80°C)
- 5 years warranty (suggested max operation 8 hours per day).
- Bending, twisting and trampling are prohibited in temperatures below 5°C (PVC is brittle in temperatures below 5°C).
- Do not puncture, or cut anywhere aside from designated intervals, shorten, or splice the flexible lighting.

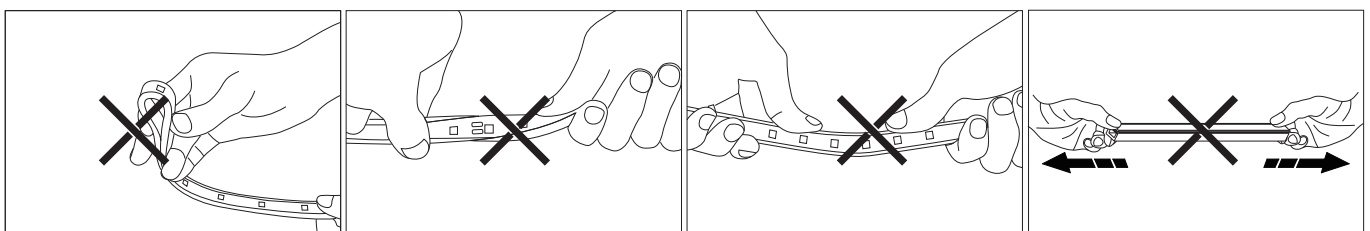


Before installation, please take out the strips as shown for better use.

Keep the strip in a straight line while installing.

In 1m long situation, the strips could be curved with 360° maximum.

The minimum bending diameter is 3.9".



Do not fold the strip in half.

Do not twist the strip in the bonding pad position.

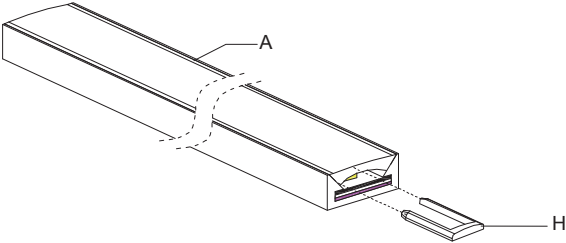
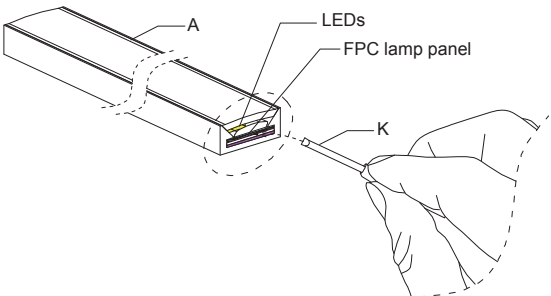
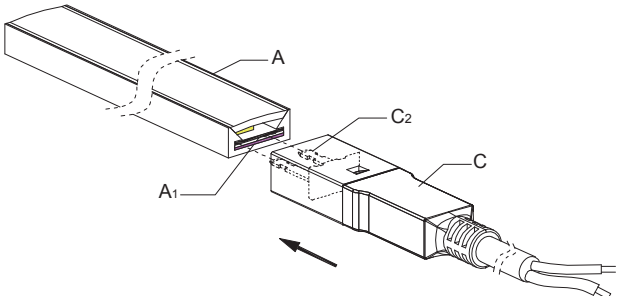
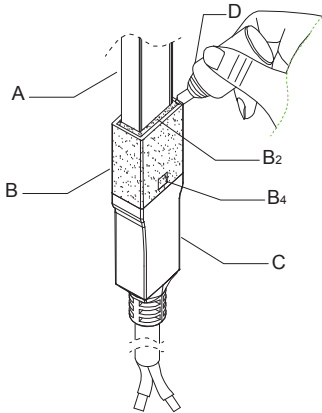
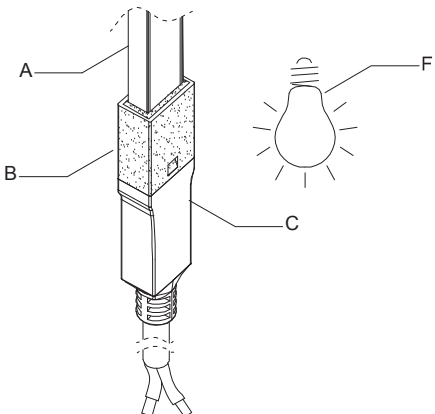
Do not bend or stress on the strips from the side.

Wire tension > 35LBS.

# 120V SERIES

LED STRIP LIGHT 4W/FT | 6W/FT

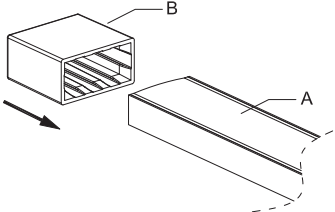
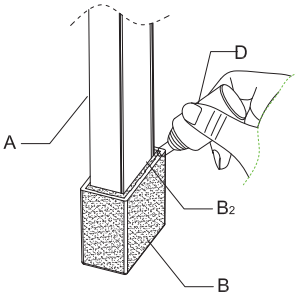
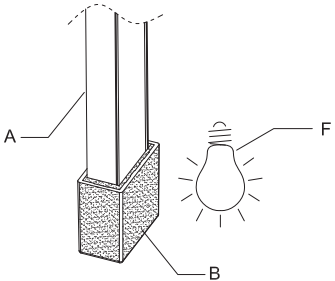
PROJECT:  
 PREPARED BY:  
 DATE:  
 TYPE:

|   |  |
|---|--|
| <p>1</p>  <p>1. Insert the U type plug H into LED tape light A. Make sure the U type plug H is onto the upper surface of the FPC</p>   | <p>2</p>  <p>2. Use a flat-blade screwdriver K to insert the bottom of the FPC board, and tilt it up slightly</p>  |
| <p>3</p>  <p>3. Insert PINs C2 into the bottom of the FPC board on the LED tape light A1, push the plug C to the bottom. Connect the LED tape light with power supply cord C3 to check whether the LED tape light(A) can be turned on normally.<br/>       (Attention: under the guide of the professional electrician)</p> | <p>4</p>  <p>4. After power-on detection, put LED tapelight(A) vertically and keep it still, and fill the gap of B2 with UV glue D.<br/>       (Attention: please wipe the excess glue with a rag after dropping the glue).</p> |
| <p>5</p>  <p>5. We recommended to use industrial UV lamp F to light up around the transparent end cap B, which can be used after the glue is solidified.<br/>       (Attention: The curing time of glue is related to the power of UV lamps).</p>  |  |

# 120V SERIES

LED STRIP LIGHT 4W/FT | 6W/FT

PROJECT:  
 PREPARED BY:  
 DATE:  
 TYPE:

|  |  |
|--|--|
| <div data-bbox="82 443 125 483">1</div>  <p>1. Put the transparent end cap(B) on the LED tape light(A) until to the bottom.</p>   | <div data-bbox="787 443 829 483">2</div>  <p>2. Put the LED tape light(A) vertically and keep it still, and filled with UV glue in the gap of B2.<br/>       (Attention: please wipe the excess glue with a rag after dropping the glue).</p> |
| <div data-bbox="82 894 125 934">3</div>  <p>3. We recommended to use industrial UV lamp F to light up around the transparent end cap B for about 10-20 seconds, which can be used after the glue is solidified.<br/>       (Attention: The curing time of glue is related to the power of UV lamps).</p> |  |