

PREPARED BY:

PROJECT:

TYPE:

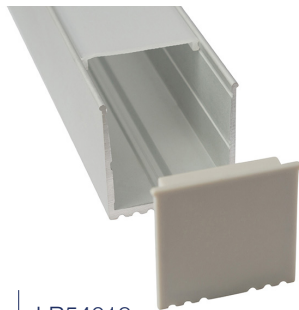
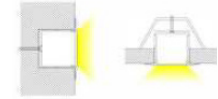
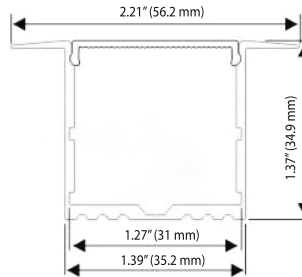


ALP017 / ALP018

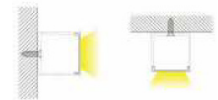
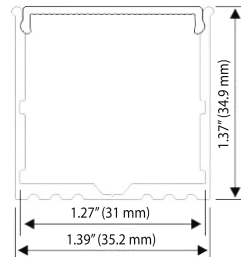
ALUMINUM PROFILE



Model | LB54017



Model | LB54018



AVAILABLE ACCESSORIES



End Cap



Opal matte cover



Suspension Kit



End Cap

ORDERING GUIDE

Model	Dimensions	Length	Application
LB54017	2.21" x 1.37" (56.2mm x 34.9mm)	8 FT.	Recessed
LB54018	1.39" x 1.37" (35.2mm x 34.9mm)		Surface Mount/Recessed/Suspended

FEATURES

Anodized silver aluminum extrusion profile for recessed, surface mount and suspension LED lighting projects.

PERFECT SHIELD FOR LED STRIPS

Aircraft grade aluminum allows for optimal heat dissipation, providing great protection for delicate LED strip lights. Not only do the aluminum channel systems dissipate the heat produced by LEDs, but the end caps protect the extrusion from dust and other undesirable elements. The mounting clips guarantees easy and secure application of the extrusion to any desired surface.

SPOT-FREE NEON EFFECT

Different covers (opal matte, semi-clear, diffused and clear) provide a well diffused light that is comparable to neon effect, rendering a softer, more uniform light.