

PREPARED BY:

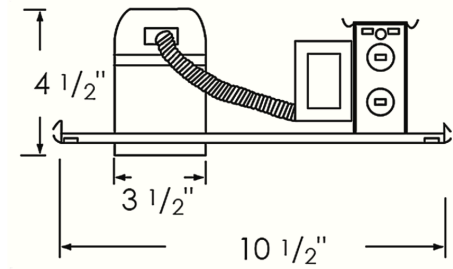
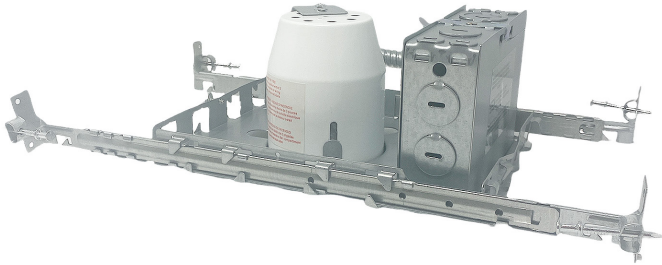
PROJECT:

TYPE:



3" HOUSING NEW CONSTRUCTION

HOUSING



FEATURES

- 3" GU-10 Line Voltage new construction housing
- 3 part quick connectors pre- installed in all J Boxes
- J Box listed for feed through wiring
- Bar hangers are designed to fit T-bar spine without additional clamps for use in bar ceilings
- Pre- installed captive nails on bar hangers

SPECIFICATIONS

- Max Wattage 50W
- Input Voltage 120V-60Hz
- Lamp Type GU10 Base
- Frame Steel
- Dimensions 4.5" x 3.5" x 10.5"

ORDERING GUIDE

Model	Description
LB15145	3" HOUSING NEW CONSTRUCTION

