

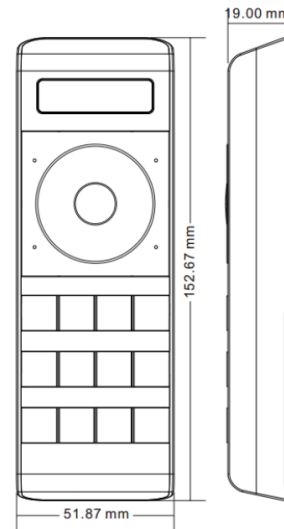
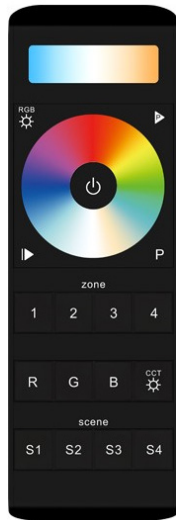
PREPARED BY:

PROJECT:

TYPE:



HAND HELD RF RGBWW CONTROLLER CONTROLLER SERIES



FEATURES

- Programmable RGB+CCT RF remote controller with 434MHz/869.5MHz/916.5MHz frequency available
- Sleek streamline design with high end PC material, comfortable to touch
- User-friendly interface, easy and simple operation
- Enables 5 channel control of RGB and dual color (warm white and cold white) as well as programmable function
- Ultra-sensitive tempered glass touch color wheel, accurate and fast RGB color tone adjustment
- R, G, B and CCT channels can be controlled separately
- Programmable function by choosing colors (maximum 5 colors) and touch the "P" key
- Pattern changing speed adjustable
- 4 running modes including jump, flash, fade and strobe are available for the programmed colors
- Control 4 zones separately or synchronously, each zone can be set endless receivers, each receiver maximally be controlled by 8 different remotes
- Set 4 scenes
- Synchronization function of pattern changing ensures consistent change forever
- Enable to dim brightness of each R, G, B, W channel, in order to mix millions colors
- Receivers can work with WiFi-RF converter after installing software on IOS and Android system

SPECIFICATIONS

- | | | | |
|-------------------------|---------------------|---------------------|--|
| • Output | RF signal | • Waterproof | IP20 |
| • Power Supply | 4.5V(3xAAA battery) | • Relative humidity | 8% to 80% |
| • Power Frequency | 869.5/916.5/434MHz | • Dimensions | 6.02" x 2.05" x 0.75"
(153mm x 52mm x 19mm) |
| • Operating Temperature | 0-40°C | | |

***Not compatible with magnetic drivers.**

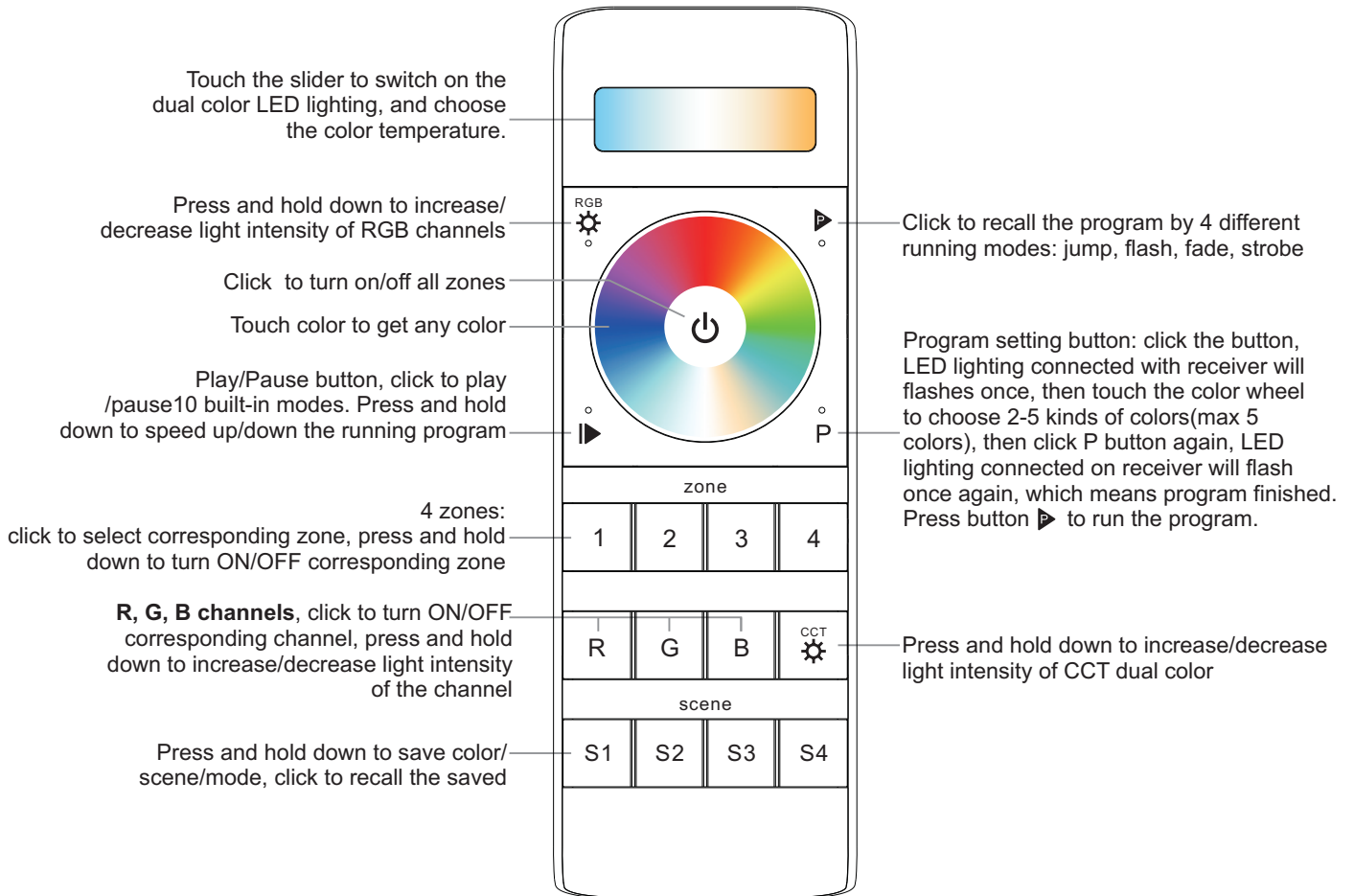
ORDERING GUIDE

Model	Description
LB2858-Z4-5C	RGB+DUAL COLOR RF WIRELESS LED DIMMER

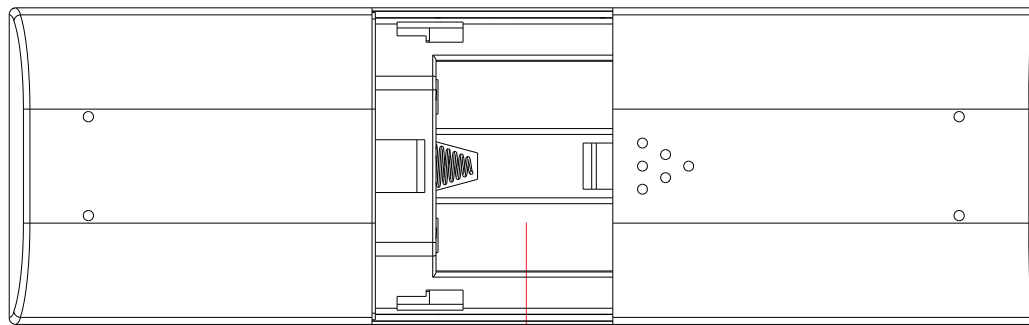
PREPARED BY:
PROJECT:
TYPE:



HAND HELD RF RGBWW CONTROLLER CONTROLLER SERIES



Front side



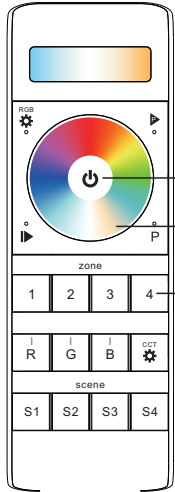
4.5V(3xAAA battery)

Back side

Safety & Warnings

- This device contains AAA batteries that shall be stored and disposed properly.
- DO NOT expose the device to moisture.

Pair with RF receiver(Method 1)



Step 1: Do wiring the RF receiver according to wiring diagram (please refer to the instruction of RF receiver that you would like to pair with).



Step 3: Power off and power on the receiver

Step 2: Click ON/OFF button to activate the remote

Step 5: Touch the color wheel, LED lights connected with the RF receiver flicker once means the receiver is paired with zone 4 successfully.

Step 4: Choose and click a zone number (e.g. zone 4)

Pair with RF receiver(Method 2)



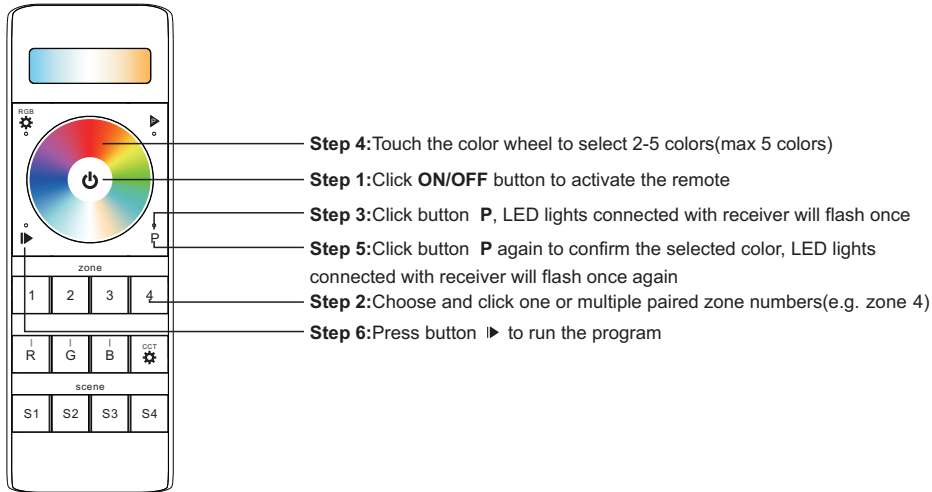
Step 1: Do wiring the RF receiver according to wiring diagram (please refer to the instruction of RF receiver that you would like to pair with).



Step 3: Power off and power on the receiver

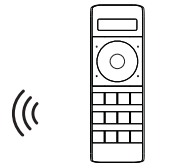
Step 4: Choose and click a zone number (e.g. zone 4) twice, then press and hold it continuously and quickly within 10 seconds, LED lights connected with the RF receiver flicker once means the receiver is paired with zone 4 successfully.

Program the running mode



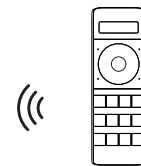
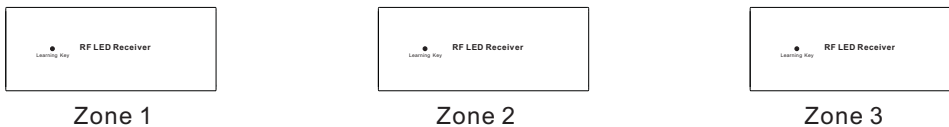
If you use multiple receivers, you have two choices:

Option 1: have all the receivers in the same zone, like zone 1



RF remote

Option 2: have each receiver in a different zone, like zone 1, 2, 3 or 4



RF remote

How to stop running mode of single color LED light caused by RGBW sender interference:

1. When pairing single color LED light to a single color remote, it might be interfered and paired by nearby RGBW senders, which might control the single color light into running mode. The running mode can not be stopped by the paired single color remote or by delete pairing.
2. Then we need this remote, and pair the remote to the receiver via above **“Pair with RF receiver(Method 2)”**, then touch the color wheel to stop the running mode.
3. Then delete pairing and pair the receiver to the single color remote again, it can be controlled by the remote again.