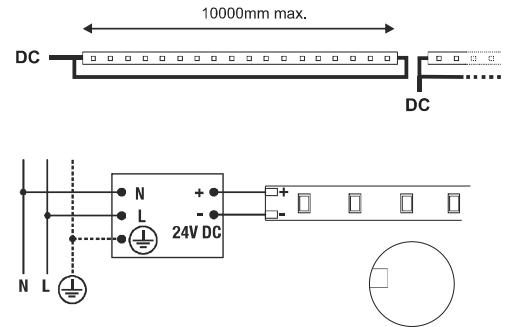
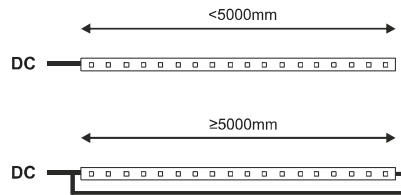
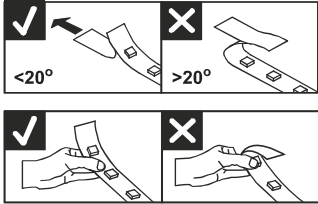
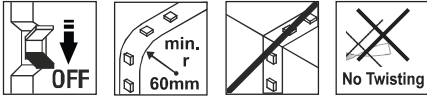
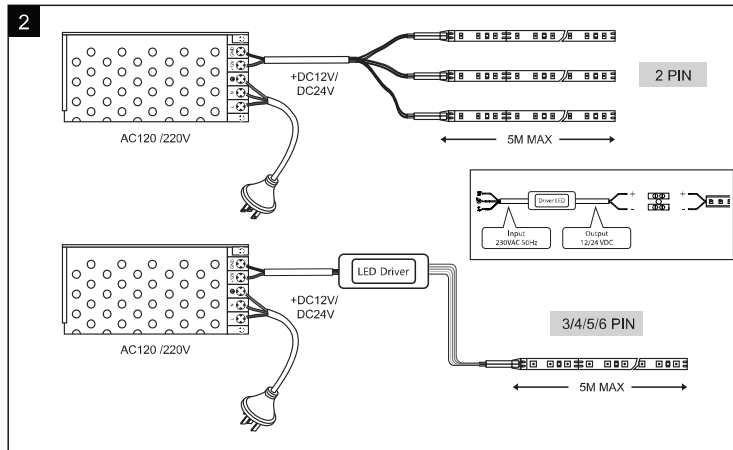
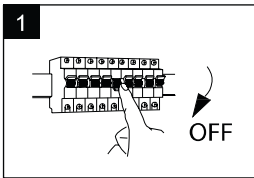


LED Strip Light Installation Guide

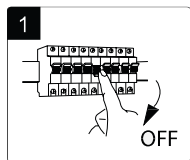
CONSTRUCTION



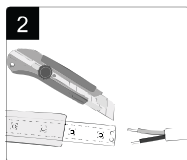
WIRE CONNECTION



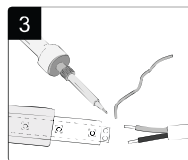
SOLDERING



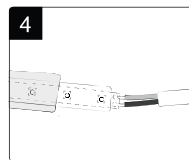
Turn off the power supply



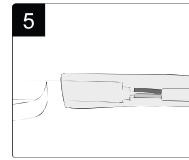
Cutting the LED strip evenly to the correct length. Pull the shrink tubing over the LED strip



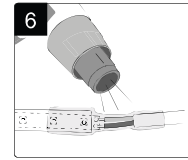
Carefully remove the transparent cover so that the soldering tags are revealed



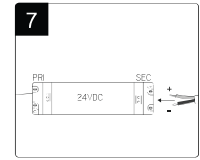
Solder the cables to the soldering tags



Remove the protective paper from the back of the LED strip



Heat the shrink tubing so that it forms a tight seal

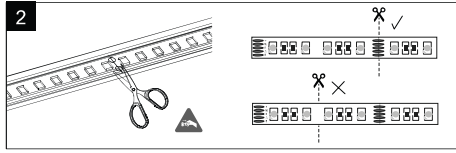
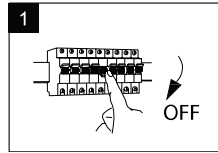


Check the LED strip lights. Connect the fittings to the LED transformer in parallel

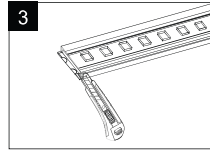
* Failure to follow the installation and handling instructions provided may result in product damage and will void the warranty

LED Strip Light Installation Guide

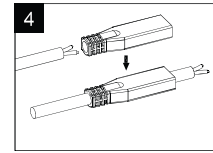
CONSTRUCTION



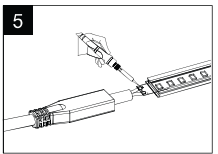
Use scissors to cut the strip in the designated places for cutting



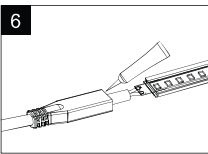
Use a blade to cut the excess part of the silicone tube, which covers the led strip



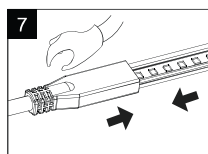
Before soldering, insert the silicone cap onto the power cable



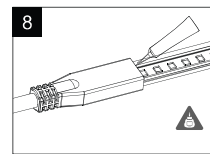
Solder the power cable to the end of the protection place



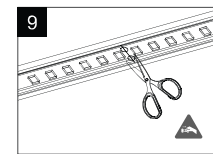
Apply an appropriate amount of silicone glue inside the protective cover



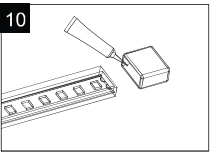
Pull the protective cover forward to ensure good insulation



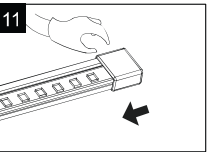
After applying an adequate amount of silicone glue, wait 24 hours, in order to guarantee it is totally dried



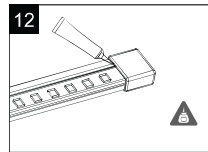
Use scissors to cut the strip in the designated places for cutting



Apply an appropriate amount of silicone inside the protective cap

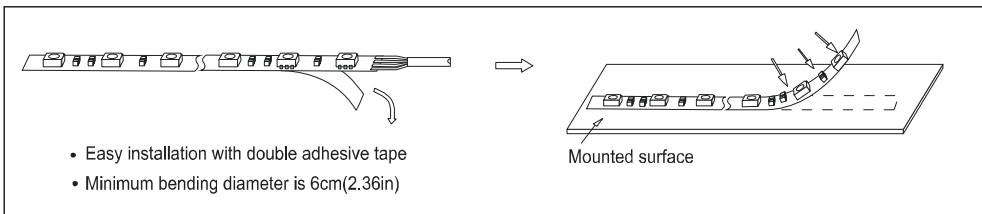
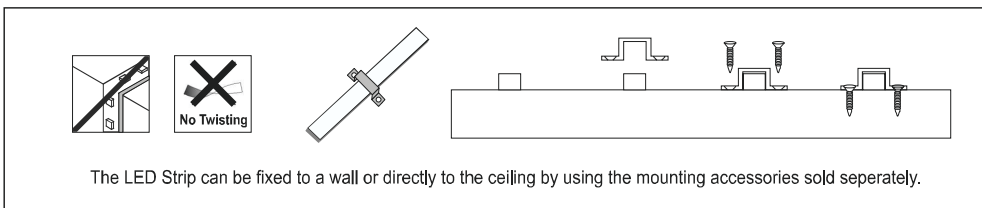


Pull the protective cover forward to ensure good insulation



After applying an adequate amount of silicone, wait 24 hours, in order to guarantee it is dried

CONSTRUCTION



* Failure to follow the installation and handling instructions provided may result in product damage and will void the warranty